

---

# ***Response Analysis***

---

La Honda Fire Brigade,  
San Mateo County Fire Company 57  
March 2004

---

# Background: La Honda Co. 57

- First-due Response Area: 50 square miles
  - Firefighters: 18 firefighters, all volunteer
  - Apparatus: 5 apparatus
    - Type II Structure Engine
    - Type III Wildland Engine
    - Rescue
    - Water Tender
    - Utility
-

---

# Run Analysis

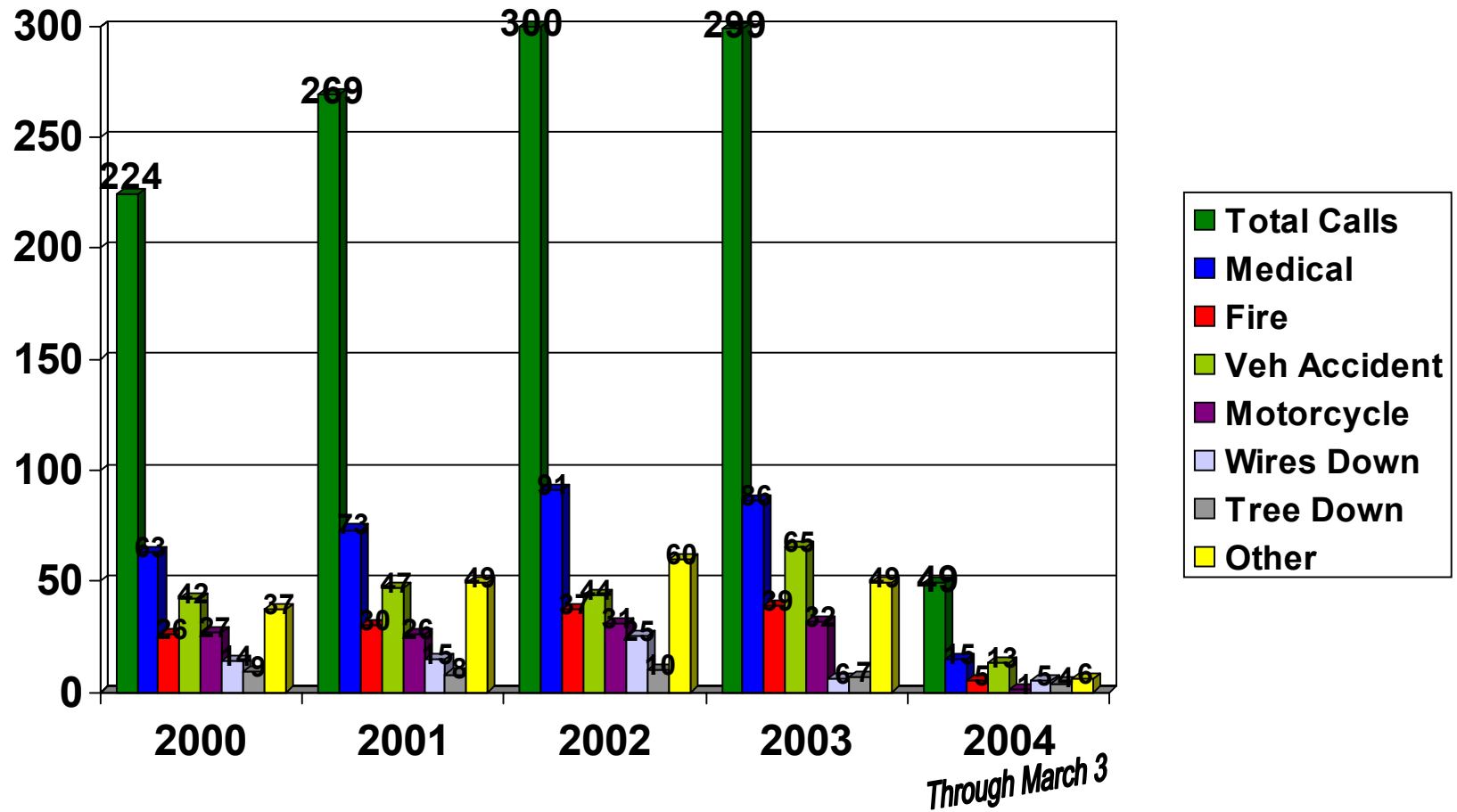
The following pages contain an in-depth analysis of response data, including:

- ❑ Response Summary
  - ❑ Total Responses
  - ❑ Responses by Type
- ❑ Responses by Month
- ❑ Responses by Day
- ❑ Responses by Time of Day

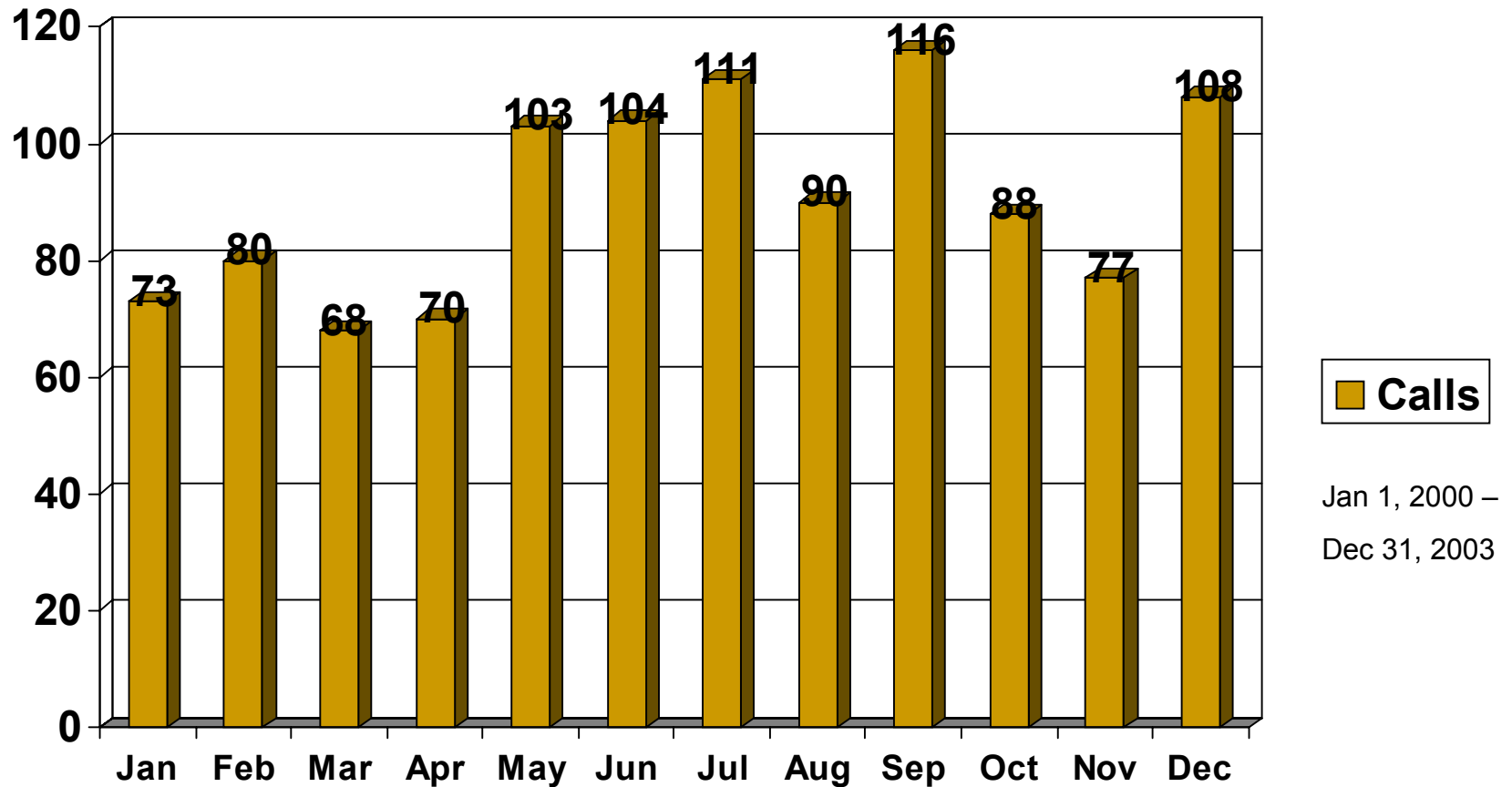
These analyses are from data contained within the La Honda Fire Emergency Response Database

---

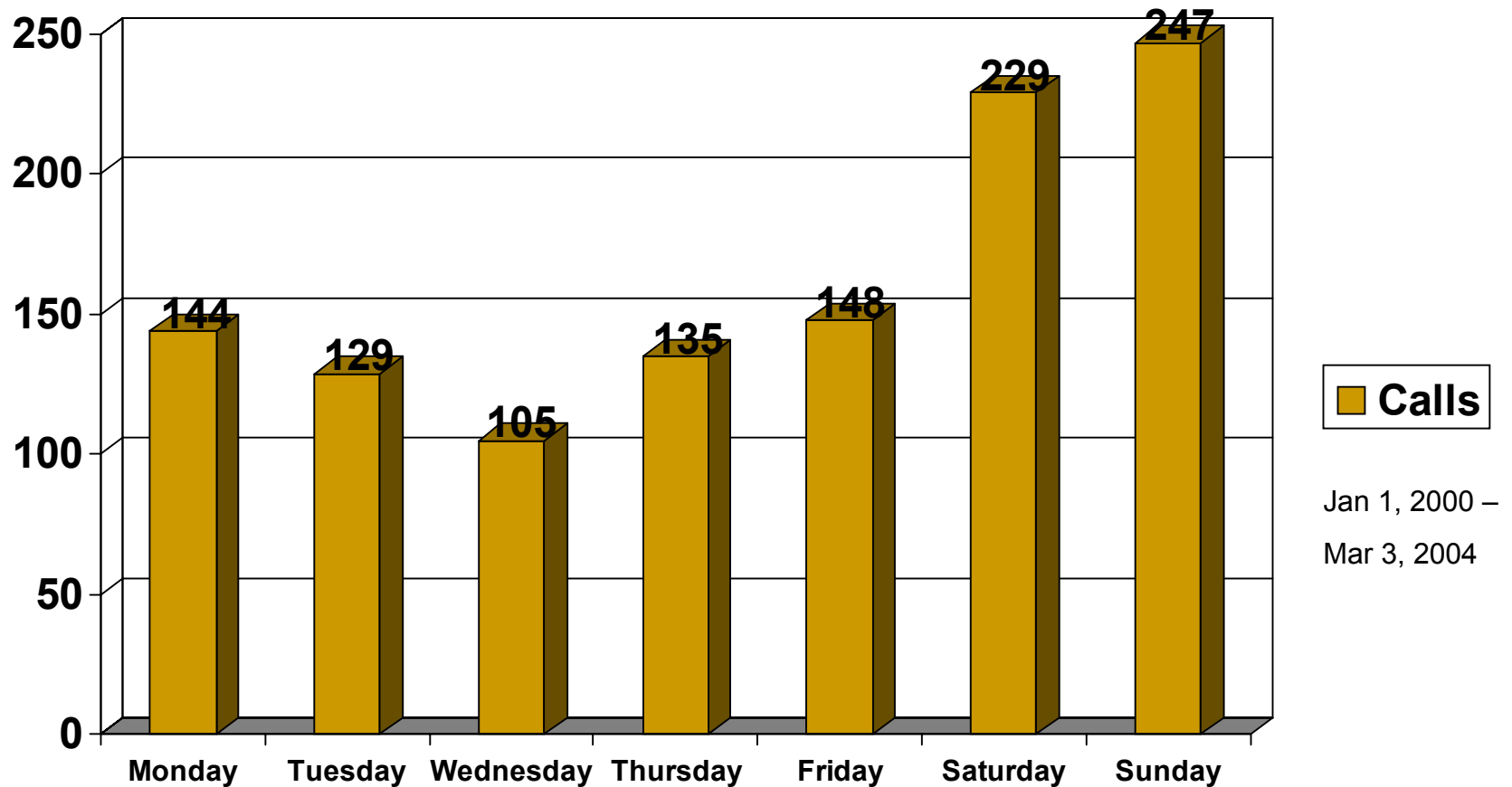
# Response Summary



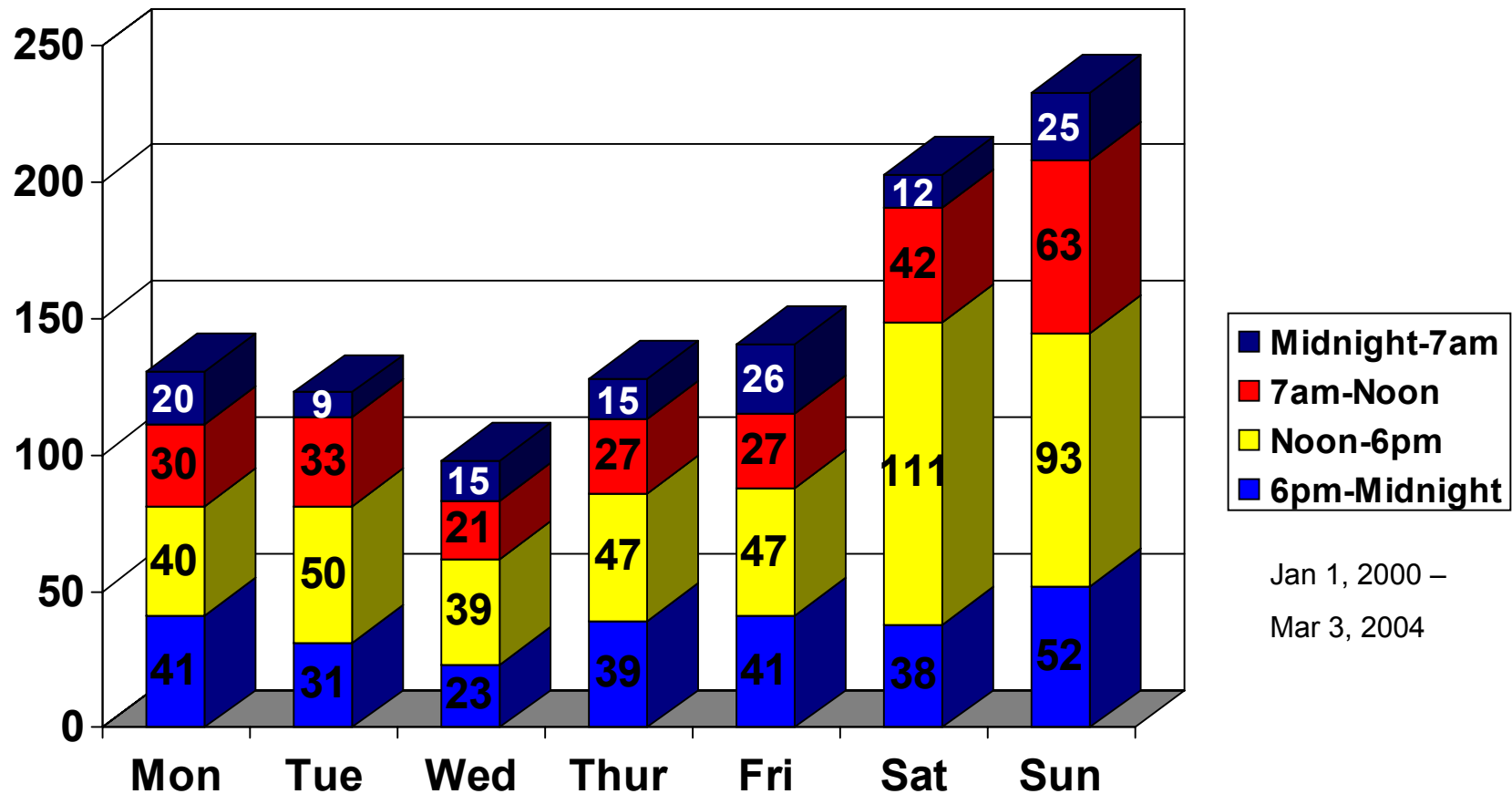
# Responses by Month



# Responses by Day of Week



# Responses by Time of Day



Jan 1, 2000 –  
Mar 3, 2004